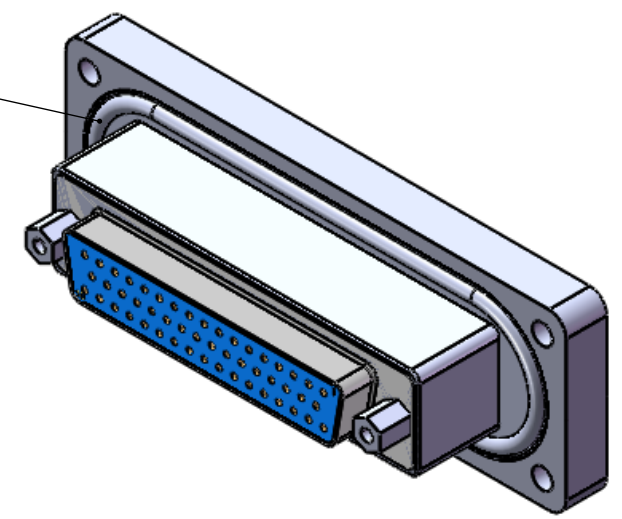


8 7 6 5 4 3 2 1

| REVISIONS | | | | |
|-----------|------|---|-----------|----------|
| ZONE | REV. | DESCRIPTION | DATE | APPROVED |
| | A | INITIAL RELEASE | 07-May-21 | MN |
| | B | CHANGED VACUUM SIDE CONNECTOR TO SS AND DAP | 17-May-21 | MN |

2-140 VITON O-RING



D

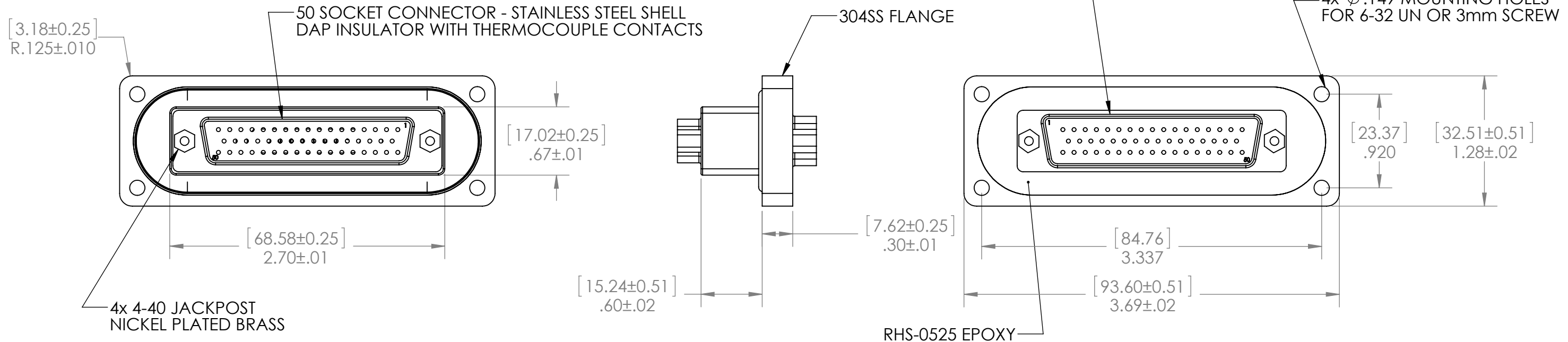
D

C

C

B

B



NOTES:

1. ODD CIRCUITS 1, 3, 5, ...49 WITH COPPER(+) CONTACTS AND WIRE. EVEN CIRCUITS 2, 4, 6, ...50 WITH CONSTANTIN(-) CONTACTS AND WIRE.
2. CONNECTORS ARE WIRED 1 TO 1, 2 TO 2, ETC.
3. HELIUM LEAK TEST @ 1 ATM 1×10^{-8} STD-CC/SEC OR BETTER, VACUUM ON O-RING SIDE.
4. HYPOT 500VDC 500 MEGOHMS .01 SECOND MINIMUM.
5. CONTINUITY TEST <3 Ohms CONNECTOR SHELL TO CONNECTOR SHELL (ISOLATED FROM SS FLANGE).
6. SEAL OPERATING TEMPERATURE -20C TO 130C.
7. SEE DRAWING CCSDxxF (15 PIN) FOR BULKHEAD CUTOUT.
8. DIMENSIONS ARE INCHES [MILLIMETERS], MILLIMETERS SHOWN FOR REFERENCE ONLY.
9. CUSTOM SIZES, WIRE OR FIBER OPTIC CONFIGURATIONS, & TESTS AVAILABLE, PLEASE CONTACT RHS FOR MORE INFORMATION.

A

A

| | | | | |
|--------------------------------------|---|----------|---|-----------|
| UNLESS OTHERWISE SPECIFIED: | NAME | DATE | <p>RHSeals RELIABLE HERMETIC SEALS</p> | |
| DIMENSIONS ARE IN INCHES | DRAWN | MM | | 06MAY2021 |
| TOLERANCES: | CHECKED | | | |
| FRACTIONAL $\pm 1/16$ | ENG APPR. | MN | | 06MAY2021 |
| ANGULAR $\pm .5$ | MFG APPR. | | | |
| X. ± 1 .X $\pm .1$ | Q.A. | | | |
| .XX $\pm .02$.XXX $\pm .005$ | PROPRIETARY AND CONFIDENTIAL THE INFORMATION CONTAINED IN THIS DRAWING IS THE SOLE PROPERTY OF RELIABLE HERMETIC SEALS. ANY REPRODUCTION IN PART OR AS A WHOLE WITHOUT THE WRITTEN PERMISSION OF RELIABLE HERMETIC SEALS IS PROHIBITED. | | TITLE: CONNECTOR SEAL CCSD50F-S1P1S1V TYPE T | |
| INTERPRET GEOMETRIC TOLERANCING PER: | SIZE | DWG. NO. | REV | |
| MATERIAL | B | 80301 | B | |
| FINISH | SCALE: 1:1 | WEIGHT: | SHEET 1 OF 1 | |
| DO NOT SCALE DRAWING | | | | |

8 7 6 5 4 3 2 1